

Keep your edge®

ACCUSHARP®

Sharpeners | Knives | Multi-tools



Learn More

**The last knife sharpener
you will ever need...**



Est. 1984

CATALOG



***Making Quality Sharpening Products,
Knives, and Multi-Tools since 1984***



Fortune Products, Inc., dba AccuSharp Int'l., is a leading manufacturer of sharpeners, knives, and multi-tools, and provider of quality products. We focus on making the most effective knife and tool sharpeners in the world. Our every effort is focused on creating products that will provide the sharpest edge possible for your knives, tools, and equipment. Whether your sharpening needs range from the kitchen, workshop, yard, hunting, fishing, or other outdoor sports, our sharpening products can help you maintain the very best edge. We are proud of the many awards we've won for product effectiveness, even when compared to brands costing hundreds more.



Table of Contents

Knife & Tool Sharpeners
Knives & Multi-Tools
Specialty Products
Product Displays
Promotional Products

New Products			
001C AccuSharp® Knife and Tool Sharpener	4-5	028C & 029C AccuSharp® 4-in-1 Knife & Tool Sharpener	21
040C AccuSharp® PRO Knife and Tool Sharpener	6	050C AccuSharp® Diamond Compact Sharpener	22
008C AccuSharp® OD Green Knife and Tool Sharpener	6	030C AccuSharp® Diamond Rod Sharpener	22
005C AccuSharp® Camouflage Knife and Tool Sharpener	7	032C AccuSharp® 9" Sharpening Steel	23
014C AccuSharp® Blaze Orange Knife and Tool Sharpener	7	034C AccuSharp® 9" Diamond Sharpening Steel	23
002C ShearSharp® Scissors Sharpener	8	027C AccuSharp® Diamond Pocket Stone	23
006C GardenSharp® Tool Sharpener	8	024C AccuSharp® Natural Arkansas Pocket Stone	23
007C AugerSharp® Tool Sharpener	9	023C AccuSharp® Arkansas Whetstone	24
012C AccuSharp® Knife and Scissors Sharpeners Combo	9	Combination Knife Sharpening Kit	
100C, 101C, & 102C AccuSharp® All-in-1 Pruner, Knife, and Tool Sharpener	10	130C AccuSharp® 6" (Dual-Sided) Sharpening Stone	24
1003C AccuSharp® Axe & Tool Sharpener	11	025C AccuSharp® DELUXE Tri-Stone Sharpening System	25
1012C AccuSharp® Lawn Mower Blade & Garden Tool Sharpener	11	064C AccuSharp® Tri-Stone Sharpening System	25
129C AccuSharp® Gourmet 15" Knife Sharpener	12	059C AccuSharp® 5-Stone Precision Knife Sharpening Kit	26
126C AccuSharp® Gourmet Multi-Angle 9" Butcher Sharpening Steel	12	060C AccuSharp® 3-Stone Precision Knife Sharpening Kit	26
052C AccuSharp® Gourmet 15" Pull-Through Knife Sharpener	13	003C AccuSharp® Tungsten Carbide Replacement Blades	27
128C AccuSharp® Gourmet 15" Dual Angle Knife & Scissors Sharpener	13	068C AccuSharp® Honing Solution	27
036C & 039C AccuSharp® Pull-Through Knife Sharpener	14	741C & 743C AccuSharp® 3.5" Replaceable Blade Razor Knife	28
080C & 081C AccuSharp® Compact Pull-Through Knife Sharpener	15	742C & 744C AccuSharp® 6-Pack 3.5" Replacement Blades for the Replaceable Blade RAZOR KNIFE	28
334C & 336C AccuSharp® Sharp N Easy® 2-Step Ceramic Knife Sharpener	16	748C AccuSharp® 3" Replaceable Blade Razor Knife	29
342C & 344C AccuSharp® 2-Step Carbide-Ceramic Knife Sharpener	17	749C AccuSharp® 6-Pack 3" Replacement Blades for the Replaceable Blade RAZOR KNIFE	29
017C AccuSharp® Diamond•PRO 2-Step Knife Sharpener	18	701C, 703C, 704C, & 709C AccuSharp® Folding Sport Knife	30
004C SturdyMount® Knife Sharpener	18	711C, 712C, & 713C AccuSharp® Lockback Knife	30
051C AccuSharp® Diamond Paddle Sharpener	19	801C ParaForce® Lockback Knife	31
013C AccuSharp® Broadhead Sharpener and Wrench	19	734C AccuSharp® AccuZip Skinning Knife	31
735C AccuSharp® Explorer Outdoor Survival Tool with Built-in Knife & Tool Sharpener	20	731C AccuSharp® Caping Knife	32
		729C AccuSharp® Gut Hook Knife	32
		732C AccuSharp® Butcher Knife	32
		730C AccuSharp® Bone Saw	32
		728C AccuSharp® Game Processing Kit	33
		738C AccuSharp® 6-Piece Processing Kit	33
		736C AccuSharp® Fillet Knife Plus 2-Step Carbide-Ceramic Knife Sharpener	34
		737C AccuSharp® 6-Piece Fillet Knife Kit	34
		041C, 042, 043C, 044C, 045C, & 046C AccuSharp® Folding Sport Knife Combo Packs	35
		716C, 717C, 718C, 721C, 722C, & 723C AccuSharp® Lockback Knife Combo Packs	35
		810C & 815C ParaForce® Lockback Knife Combo Packs	36
		800C ParaForce® Multi-Tool	36
		084C AccuSharp® Gardener's Multi-Tool	37
		085C AccuSharp® Sportsman's Multi-Tool	37
		802C ParaForce® 15-Function Multi-Tool	37
		1020C The Big Bobber Floating Cooler	38
		1006C & 1007 Super Snaps Tarp Clip and Grommet Replacement	39
		1008C Super Snaps XL Tarp Clip and Grommet Replacement	39
		069-Tray AccuSharp® Knife and Tool Sharpener 12 Count Tray	40
		082-Tray AccuSharp® Compact Pull-Through Knife Sharpener 6 Count Tray	40
		334CD & 335CD AccuSharp® Sharp N Easy® 2-Step Knife Sharpener 24 Piece Counter Displays	41
		343CD & 345CD AccuSharp® 2-Step Carbide-Ceramic Knife Sharpener 24 Piece Counter Displays	41
		745PDQ & 746PDQ AccuSharp® 6-Piece Replaceable Blade Razor Knife Plus Blades PDQ	42
		016-Tray AccuSharp® Diamond•PRO 2-Step Knife Sharpener 12 Count Tray	43
		800MTS ParaForce® Multi-Tool 18 Piece Counter Display	43
		801LBKS ParaForce Lockback Knife 18 Piece Counter Display	43
		AccuSharp® Side Kick Floor Display	44
		AccuSharp® Wing Rack Floor Display	44
		AccuSharp® Rack Display	45
		AccuSharp® Point of Purchase (POP) Display	45
		STAND OUT to your customers with Custom Imprints!	46 & 47

AccuSharp® 6" Explorer Outdoor Survival Tool with Built-in Knife & Tool Sharpener



AccuSharp® 6-Piece Replaceable Blade Razor Knife Plus Blades PDQ



AccuSharp® 6" (Dual-Sided) Sharpening Stone



AccuSharp® 3" Replaceable Blade Razor Knife



AccuSharp® 6-Pack 3" Replacement Blades for the Replaceable Blade RAZOR KNIFE



AccuSharp® Gourmet 15° Knife Sharpeners



At AccuSharp®, we've noticed a paradigm shift in kitchen knives. Traditionally set at an 18°-21° angle, kitchen knives are trending towards a 15° blade for a sharper edge, perfect for slicing and dicing in

meal preparations. As a result of this paradigm shift, we've created a new line of knife sharpeners called the Gourmet 15° Series. Our new Gourmet 15° Series includes sharpeners featuring reversible and replaceable diamond-honed tungsten carbide blades, diamond coated ceramic rods and fine ceramic rods, along with a sharpening steel with 15° and 21° angle guides. Our traditional sharpeners, which are set at a 21° angle, are still a great choice for general use.

We make it easy for culinary artists and home chefs alike to keep their edge!



Gourmet 15°
Knife Sharpener



Gourmet 15°
Pull-Through Sharpener



Gourmet 15°
Dual Angle Knife and
Scissors Sharpener



AccuSharp® Knife and Tool Sharpener

Finally a knife sharpener anyone can use. Easily sharpen knives (even serrated knives), cleavers, axes, machetes, and many other cutting tools within seconds. The large, ergonomic handle fits either hand comfortably and features a full-length finger guard to safely protect your fingers while using. The reversible sharpening blades are made of diamond-honed tungsten carbide and provide years of reliable use. The original AccuSharp® comes in white, brushed aluminum, blaze-orange, olive drab green, and camouflage. Replacement blades are sold separately.



(001C)

MADE IN THE
USA



Scan here to see how our AccuSharp® Knife and Tool Sharpener works.



AccuSharp® PRO Knife and Tool Sharpener



Scan here to see how our AccuSharp® PRO Knife and Tool Sharpener works.



(040C)

MADE IN THE
USA



This chic AccuSharp® PRO is sure to impress and fit into any kitchen with the same award-winning features as the 001C AccuSharp®.



AccuSharp® Camouflage Knife and Tool Sharpener



Scan here to see how our AccuSharp® Knife and Tool Sharpener works.



(005C)

MADE IN THE USA

AccuSharp® OD Green Knife and Tool Sharpener



Scan here to see how our AccuSharp® Knife and Tool Sharpener works.



(008C)

MADE IN THE USA

AccuSharp® Blaze Orange Knife and Tool Sharpener



(014C)

MADE IN THE USA



Scan here to see how our AccuSharp® Knife and Tool Sharpener works.



ShearSharp® Scissors Sharpener

ShearSharp® Scissors Sharpener sharpens general purpose scissors, hedge clippers, and tin snips. If you own a pair of scissors, you will want to have the easy-to-use, affordable ShearSharp® Scissors Sharpener. The sharpening blade is diamond-honed tungsten carbide and provides years of reliable use.



(002C)



Scan here to see how our ShearSharp® Scissors Sharpener works.



MADE IN THE
USA



GardenSharp® Tool Sharpener

The GardenSharp® Tool Sharpener is designed to sharpen all single-beveled edge and hard to sharpen items in your tool shed like lawnmower blades, pruning shears (secateurs), limb loppers, hoes, shovels, and scythes. Florists, landscapers, and gardeners need the GardenSharp® Tool Sharpener!



(006C)



Scan here to see how our GardenSharp® Tool Sharpener works.



MADE IN THE
USA



AugerSharp® Tool Sharpener

The ice fisherman's dream. Now you can spend more time fishing and less time drilling holes in the ice. Ideal for all those single-beveled blades.



(007C)

MADE IN THE
USA



AccuSharp® Knife and Scissors Sharpeners Combo

Sharpen just about anything in the house. This combo pack consists of the AccuSharp® Knife & Tool Sharpener and the ShearSharp® Scissors Sharpener.



(012C)

MADE IN THE
USA



Scan here to see
how our AccuSharp®
and ShearSharp®
Sharpeners work.



AccuSharp® All-in-1 Pruner, Knife, and Tool Sharpener

The AccuSharp® All-In-1 Pruner, Knife, and Tool Sharpener is custom made for sharpening pruners, loppers, shears, knives, axes, hatchets, mower blades, scissors, and any other single or double-beveled edge tool with just a few strokes. The pre-angled diamond-honed tungsten carbide blades are exactly what you need to restore and sharpen your edge every time you need it. Available in blue, green, and orange.

Sharpens:



Lawn Mower Blades



(100C)



(101C)



(102C)



Use to Sharpen Double Beveled Edge Blades (Axes and Knives)



Use to Sharpen Single Beveled Edge Blades (Pruners, Lawn Mower Blades, etc.)



Use to Sharpen Scissors



Pruners



Knives



Scissors



Hatchets

MADE IN THE
USA



AccuSharp® Axe & Tool Sharpener

The Axe & Tool Sharpener is quick and easy to use. This sharpener is excellent for sharpening axes and other large garden tools. The pre-angled tungsten carbide inserts make quick work of sharpening your garden tools, both single and double beveled edge, with just a few strokes. Use slot 1 for double-beveled edge tools like axes and hatchets, use slot 2 for single-beveled edge tools like mower blades, garden shears, shovels, and more.



(1003C)



Scan here to see how our AccuSharp® Axe and Tool Sharpener works.

AccuSharp® Lawn Mower Blade & Garden Tool Sharpener

The Lawn Mower Blade & Garden Tool Sharpener is excellent for sharpening lawn mower blades & other single beveled-edge garden tools. The tungsten carbide insert makes quick work of sharpening your garden and single-beveled edge tools in just a few strokes.



(1012C)



AccuSharp® Gourmet 15° Knife Sharpener

Introducing the AccuSharp® Gourmet 15° Knife Sharpener — the ultimate in precision for refining gourmet knives, serrated or straight-edged. With reversible diamond-honed tungsten carbide blades, ergonomic handle, and full-length finger guard, it prioritizes safety and seamless operation. Rust-resistant and easy to clean, it's perfect for home and industrial kitchens. Replacement blades are available for ongoing peak performance.



(129C)

MADE IN THE
USA



AccuSharp® Gourmet Multi-Angle 9° Butcher Sharpening Steel

Elevate your knives with the AccuSharp® Gourmet Multi-Angle 9° Butcher Sharpening Steel. With 15° and 21° angle guides, it suits various blade angles. Swiftly revive well-maintained edges in about 10 strokes. Magnetized to keep shavings away from food prep areas, it features a rubber over-molded handle for a secure grip. Perfect for home or industrial kitchens.

Grit: 1500



(126C)



AccuSharp® Gourmet 15° Pull-Through Knife Sharpener

The AccuSharp® Gourmet 15° Pull-Through Knife Sharpener is ideal for maintaining 15-degree blades. Featuring diamond-coated and fine ceramic rods, it sharpens and hones with precision. The heavy-duty handle offers stability and comfort, thanks to its ergonomic design and rubber over-molded grip. This commercial-grade sharpener is the ultimate choice for keeping your gourmet knives in top condition.

Coarse Diamond Grit: 320 | Fine Ceramic Grit: 1500



Scan here to see how our AccuSharp® Gourmet 15° Pull-Through Knife Sharpener works.



(052C)

AccuSharp® Gourmet 15° Dual Angle Knife & Scissors Sharpener

Introducing the AccuSharp® Gourmet 15° Dual Angle Knife and Scissors Sharpener, crafted to effortlessly sharpen straight and serrated knives, along with scissors, with just a few swift strokes. Engineered with dual angles preset at 15° and 21°, it streamlines the sharpening process for both home and industrial-grade kitchens. Crafted from premium American-made diamond-honed tungsten carbide, the reversible blades offer twice the lifespan.



(128C)



AccuSharp® Pull-Through Knife Sharpener

This commercial-grade knife sharpener combines our diamond-honed tungsten carbide sharpening blades and fine ceramic rods. The heavy-duty ergonomically designed handle with the rubber over-molded grip provides a stable and comfortable platform for sharpening all your knives. Available in blue/white and orange/green.

Fine Ceramic Grit: 1500



Scan here to see how our AccuSharp® Pull-Through Knife Sharpener works.



Scan here to see how our AccuSharp® Pull-Through Knife Sharpener works.



(036C)



(039C)



AccuSharp® Compact Pull-Through Knife Sharpener

This compact commercial-grade knife sharpener combines our diamond-honed tungsten carbide sharpening blades and fine ceramic rods. This sharpener is perfect for sharpening and maintaining your blades. Available in white/blue and orange/green.

Fine Ceramic Grit: 1500



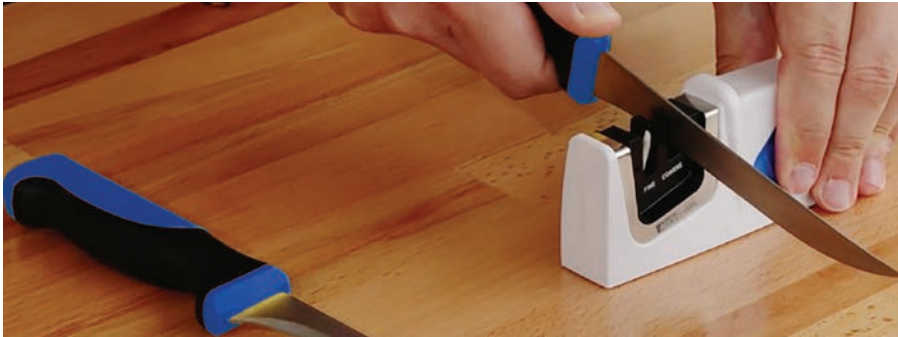
(080C)



(081C)



Scan here to see how our AccuSharp® Compact Pull-Through Sharpeners work.



AccuSharp® Sharp N Easy® 2-Step Ceramic Knife Sharpener

The 2-Step Ceramic Knife Sharpener is an innovative tool that anyone can use. The pre-angled ceramic rods are exactly what you need to care for and maintain your blades. The two stages, dark for coarse and white for fine, allow for proper angle every time. Available in blue/black and orange/green.

Coarse Diamond Grit: 800 | Fine Ceramic Grit: 1500



Scan here to see how our AccuSharp® Sharp N Easy® 2-Step Ceramic Knife Sharpener works.



(334C)



Scan here to see how our AccuSharp® Sharp N Easy® 2-Step Ceramic Knife Sharpener works.



(336C)

AccuSharp® 2-Step Carbide-Ceramic Knife Sharpener

The AccuSharp® 2-Step Carbide-Ceramic Knife Sharpener features pre-angled diamond-honed tungsten carbide blades and fine ceramic rods that will maintain an accurate edge. Just three or four strokes through the coarse slot restores the edge then three or four strokes through the fine rods finishes and polishes the edge for a smooth sharp finish. Available in blaze orange and blue/white.

Fine Ceramic Grit: 1500



(342C)



(344C)

AccuSharp®
2-Step Carbide-Ceramic
Knife Sharpener

Tungsten Carbide Blades

COARSE

ACCUSHARP

FINE

Fine Ceramic Rods

Provide a sharp edge everytime you need it!



AccuSharp® Diamond•PRO 2-Step Knife Sharpener

This sharpener features pre-angled coarse diamond and fine ceramic rods to sharpen, restore, and then polish a blade's edge. The Diamond PRO 2-Step exterior is made of brushed aluminum and finished with a rubber-molded grip and rubber feet for safety.

Coarse Diamond Grit: 320
Fine Ceramic Grit: 1500



Scan here to see how our AccuSharp® Diamond PRO 2-Step Knife Sharpener works.



(017C)

SturdyMount® Knife Sharpener

Ideal for mounting on cutting boards, kitchen counters, fillet boards, workbenches, butcher blocks, cleaning tables, and more. The diamond-honed tungsten carbide sharpening blades are reversible and replaceable. A durable ABS plastic body and stainless steel screws make the SturdyMount® Knife Sharpener ideal for indoor and outdoor use.



(004C)

MADE IN THE
USA



AccuSharp® Diamond Paddle Sharpener

This double-sided sharpener features an aggressive coarse diamond grit surface, a fine diamond surface for honing and finishing, and also includes a groove for sharpening hooks and darts. The folding handle allows you to fold and store your sharpener with ease.

Coarse Grit: 320 | Fine Grit: 600



(051C)



Scan here to see how our AccuSharp® Diamond Paddle Sharpener works.

AccuSharp® Broadhead Sharpener and Wrench

This exceptional tool combines a sharpener and wrench, setting a new standard in the industry. Its innovative design ensures all your broadheads stay razor-sharp, making it your primary tool of choice. The wrench is compatible with 2, 3, 4, and 5 blade broadheads. To achieve the perfect cutting edge, simply pass the blade through the two tungsten carbide blades and the ceramic honing rods 3 or 4 times each.

Please note that some broadheads may require disassembly for optimal sharpening.

Fine Ceramic Grit: 1500



MADE IN THE
USA

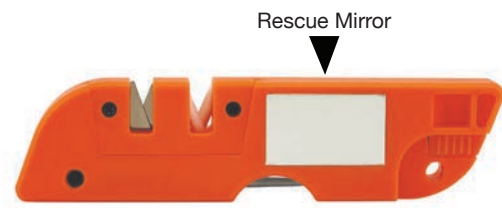


(013C)

AccuSharp® Explorer Outdoor Survival Tool with Built-in Knife & Tool Sharpener

With diamond-honed tungsten carbide blades and fine ceramic rods, this outdoor survival tool and sharpener keeps your knives sharp and finely honed at all times. Its unique diamond-tapered rod is perfect for sharpening gut-hook knives and serrated edges, while a central groove allows you to sharpen fishhooks and pointed objects. This multi-functional tool also features a built-in fire starter, compass, emergency whistle (tested at 120dB), and SOS mirror, making it an indispensable companion for the outdoor adventurer.

Diamond Rod Grit: 400 | Fine Ceramic Grit: 1500



(735C)



AccuSharp® 4-in-1 Knife & Tool Sharpener

This sharpener features tungsten carbide blades, fine ceramic rods, a retractable tapered diamond rod, and a flat diamond file, all in one pocket sized unit. The AccuSharp® 4-in-1 Sharpener is the outdoorsmen's best friend for sharpening and honing your blades. Available in orange and black.

Diamond Rod Grit: 400 | Diamond File Grit: 400 | Fine Ceramic Grit: 1500



(028C)



(029C)



Scan here to see how our AccuSharp® 4-in-1 Knife & Tool Sharpeners work.



AccuSharp® Diamond Compact Sharpener

The AccuSharp® diamond coated compact sharpener is a tapered, cone-shaped rod engineered to use on serrations and tight spaces. This sharpener also features a groove for sharpening hooks and darts.

Diamond Grit: 320



(050C)



AccuSharp® Diamond Rod Sharpener

The AccuSharp® Diamond Rod Sharpener is a diamond-coated steel rod used to sharpen all kinds of knives, including serrated edges. The retractable rod is engineered with a cone-shaped end for use on serrations and tight spaces. The diamond-coated steel rod also features a groove for sharpening hooks and darts.



Diamond Rod Grit: 280



(030C)



Scan here to see how our AccuSharp® Diamond Rod Sharpener works.

AccuSharp® 9" Sharpening Steel

The 9" AccuSharp® Sharpening Steel realigns the blade's edge keeping all your household knives properly honed. The steel surface quickly returns the edge of a good blade in around 10 strokes. Grit: 1500



(032C)

AccuSharp® 9" Diamond Sharpening Steel

Fast-sharpening and long-lasting, the 9" AccuSharp® Diamond Sharpening Steel will keep all your household knives properly honed. The durable diamond surface quickly returns the edge of a good blade in around 10 strokes.

Grit: 1500



(034C)

AccuSharp® Diamond Pocket Stone

The dual-sided pocket sharpening stone features both coarse and fine diamond surface with a groove for sharpening hooks and darts.

Coarse Grit: 320 • Fine Grit: 800



(027C)

AccuSharp® Natural Arkansas Pocket Stone

The AccuSharp® Natural Arkansas Pocket Stone offers traditional sharpening for all kinds of straight-edged knives & hooks.



(024C)

AccuSharp® Arkansas Whetstone Combination Knife Sharpening Kit

The AccuSharp® Whetstone Combination Knife Sharpening Kit includes two 3" sharpening stones for traditional coarse and fine sharpening, plus a 1 oz. bottle of honing oil in an organized kit.

Hard Stone Grit: 800-1000

Soft Stone Grit: 400-600



(023C)

MADE IN THE USA



AccuSharp® 6" (Dual-Sided) Sharpening Stone

The dual-sided AccuSharp 6" Sharpening Stone combines sharpening and polishing into one cost-effective tool, perfect for maintaining tools and knives. The 6" stone allows for multiple stages of sharpening without interruption, saving time and effort. Get customized sharpening for different types of blades by adjusting the pressure and angle according to your preference.

Material: Silica Oxide | Coarse Grit: 120 | Fine Grit: 240



(130C)



AccuSharp® DELUXE Tri-Stone Sharpening System

This rotating, 6" three-stone system is equipped with coarse diamond, medium alumina-oxide, and fine ceramic stones and includes a 21° angle guide. The base features slip resistant feet, but can also be attached to a work surface if preferred.

Diamond Coarse Grit: 320
Synthetic Medium Grit: 280
Fine Ceramic Grit: 1500



Scan here to see how our AccuSharp® Tri-Stone Sharpening System works.



(025C)



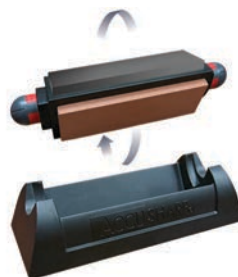
AccuSharp® Tri-Stone Sharpening System

This rotating, Tri-Stone Sharpening System provides extra durability and safety on any surface with a rubber-grip base that prevents sliding while sharpening and honing your blades. Also included is an angle guide to assist in maintaining a consistent angle while sharpening. The tri-stone system comes with 3 stone surfaces to choose from with the ability to quickly and easily switch between them.

Coarse Grit: 120
Medium Grit: 180
Fine Grit: 240



(064C)



AccuSharp® 5-Stone Precision Knife Sharpening Kit

The 5-stone kit includes fine, medium, and coarse alumina oxide stones, an extra coarse diamond-coated stone (with a groove for hook sharpening), and a fine ceramic stone for serrated blades. Angle guide has settings at 11°, 15°, 18°, 21°, 25°, and 30° to sharpen a wide variety of knives.

Diamond Coarse Grit: 320
Coarse Grit: 120
Medium Grit: 180
Fine Grit: 280
Ceramic Fine Grit: 1500



(059C)



AccuSharp® 3-Stone Precision Knife Sharpening Kit

The AccuSharp® 3-Stone Precision Knife Sharpening Kit is equipped with six angle guides and three sharpening options to keep your knife's edge razor sharp with fine, medium, and coarse alumina-oxide stones. Angle guide has settings for 11°, 15°, 18°, 21°, 25°, and 30° angles.

Coarse Grit: 120
Medium Grit: 180
Fine Grit: 280



(060C)



Scan here to see how our AccuSharp® Precision Knife Sharpening Kit works.

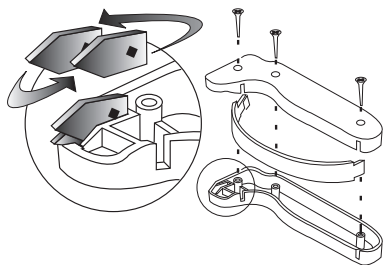
AccuSharp® Tungsten Carbide Replacement Blades

For the best possible sharpening edge, we only use the finest American-made diamond honed tungsten carbide available. These blades are reversible for double life. Most users report an average life of 5 to 10 years between replacements. Beware of other brands that use cheap imported carbide! Insist on AccuSharp®.



(003C)

MADE IN THE
USA



AccuSharp® Honing Solution

AccuSharp® Honing Solution is ideal for all traditional natural stone sharpening. This solution protects stones from clogging and provides a smooth sharpening surface for your knives and tools.



(068C)

MADE IN THE
USA



AccuSharp® 3.5" Replaceable Blade Razor Knife

A great knife for camping, hiking, and everyday carry. This knife includes 2 extra replacement blades that allow you to quickly change out your dull blade within seconds using the innovative quick release lever. The push button on the side allows you to easily lock your blade into 3-locking positions (110°, 145°, and 180°). Measuring 8.5" when opened, the Replaceable Blade Razor Knife is made with a 3.5" 420 stainless steel blade and an ergonomically designed handle for ease of use. Available in either blue or orange.



(741C)



(743C)



Actual Size:
8.5" Open
4.875" Closed
3.5" Blade

AccuSharp® 6-Pack 3.5" Replacement Blades for the Replaceable Blade RAZOR KNIFE

Quickly change out dull blades with these 3.5", 420 stainless steel replacement blades made to fit the AccuSharp® Replaceable Blade Razor Knife. Use the quick release lever on the blade holder to release the dull blade and replace with the sharper replacement blade; press the release lever down to lock the blade in place.



(742C)



(744C)



AccuSharp® 3" Replaceable Blade Razor Knife

Introducing the AccuSharp® 3" Replaceable Blade Razor Knife: a versatile pocket companion for everyday carry. This adaptable knife comes with two extra blades, allowing you to easily exchange dull ones using the innovative quick-release lever. The push button on the side allows you to easily lock your blade into 3-locking positions (110°, 145°, and 180°). With a length of 7.5" when unfolded, this knife features a 3" 420 stainless steel blade and an ergonomically crafted, non-slip handle for comfortable handling. Perfect for camping, hiking, or everyday use, it seamlessly blends functionality with aesthetics, providing exceptional cutting performance when you need it.

Actual Size:
7.5" Open
4.5" Closed
3" Blade



(748C)



AccuSharp® 6-Pack 3" Replacement Blades for the Replaceable Blade RAZOR KNIFE

Easily replace dull blades with these 3" 420 stainless steel replacement blades, designed for the AccuSharp® 3" Replaceable Blade Razor Knife. Simply use the quick-release lever to remove the old blade and insert a new, sharper one. Press the lever down to secure the new blade in place.



(749C)



AccuSharp® Folding Sport Knife

This knife is constructed of anodized aluminum and stainless-steel providing years of rust-free use. The belt clip ensures that this knife will always be by your side when you need it. The wheel lock feature keeps this knife securely locked open or closed. It also features a glass breaker for emergencies and rescue. A great pocket-knife for camping, hiking, and everyday carry. Available in blue, black, camouflage, and orange.



(701C)



(703C)



(704C)



(709C)

Actual Size: 7" Open | 4" Closed | 3" Blade

AccuSharp® Lockback Knife

This lightweight, stainless steel blade, features a removable one-hand opening pin, Allen wrench, safety lock, and a comfortable G10 handle grip in three of our top-selling colors; black, blaze orange, and camouflage.



(711C)



(712C)



(713C)

Actual Size: 8" Open | 4.5" Closed | 3.5" Blade

ParaForce® Lockback Knife

The ParaForce® Lockback Knife is lightweight, durable, and ideal for everyday carry. This folding knife features a belt clip, 3" 420 stainless steel blade, and a safety lock. This handy knife fits comfortably in your pocket and safely in the palm of your hand.



(801C)

Actual Size:
7" Open
4" Closed
3" Blade



(801LBKS)

18 piece counter display
assorted colors



AccuSharp® AccuZip Skinning Knife

This 420 stainless steel game processing knife features a blunt tip that prevents the knife from puncturing internal organs which can spoil the meat. Made with an ergonomically designed handle in blaze orange, this knife includes a nylon sheath with belt loop.

Actual Size:
9" Total
4" Blade



(734C)



AccuSharp® Caping Knife

The AccuSharp® Caping Knife features a finer edge with a smaller razor-sharp blade. This 420 stainless steel knife is strong and durable, making your game processing a breeze. The blaze orange handle is made with a non-slip rubber grip for comfort and ease of handling. This knife comes with a nylon sheath with belt loop.



(731C)

Actual Size:
8.5" Total
4" Blade

AccuSharp® Butcher Knife

The AccuSharp® Butcher Knife is primarily used for cutting through thick cuts of meat and bone. This 420 stainless steel knife is strong and durable, making your game processing a breeze. The ergonomically designed handle in blaze orange is made with a non-slip rubber grip for comfort and ease of use. This knife comes with a nylon sheath with belt loop.



(732C)

Actual Size:
9" Total
4" Blade

AccuSharp® Gut Hook Knife

A good field dressing knife, the AccuSharp® Gut Hook Knife features a 420 stainless steel blade that is strong and durable, making the process of opening the body cavity a breeze. The blaze orange handle is made with a non-slip rubber grip for comfort and ease of handling. This knife comes with a nylon sheath with belt loop.



(729C)

Actual Size:
8.5" Total
3.5" Blade

AccuSharp® Bone Saw

The 6" Bone Saw is a practical and essential field tool for tackling many tasks. Designed with a textured T-Shaped handle in blaze orange, machined finger grooves, molded rubberized grip, and a 6" 420 stainless steel saw blade; this highly visible, compact and lightweight bone saw is built for the demands of the outdoors. This saw comes with a nylon sheath with belt loop.



(730C)

Actual Size:
9.5" Total
6" Blade

AccuSharp® Game Processing Kit

Control how your game is broken down with the AccuSharp® Game Processing Kit. The complete set of tools and accessories allow you to process your game like a pro. Our game processing kit includes a butcher knife, caper knife, gut hook knife, bone saw, ribcage spreader, zip ties, game cleaning gloves, with a hard-side carry case, and our award-winning AccuSharp® Knife Sharpener to keep your edge. Our 420 stainless steel knives are made with a wide, ergonomically designed, non-slip rubber grip handle for comfort and ease of handling.



(728C)



Scan here to see how our AccuSharp® Knife and Tool Sharpeners work.



Includes the Award-Winning
AccuSharp®
Knife Sharpener

AccuSharp® 6-Piece Processing Kit

The AccuSharp® 6-Piece Processing Kit is everything you need when it comes to field dressing. This 6-piece kit comes with a 3" caping knife, 4" butcher knife, 4" AccuZip skinning knife, LED head lamp with 4-light modes, 2-step carbide-ceramic knife sharpener to help maintain your blades, and a compact nylon carrying case. Our 420 stainless steel knives are made with a wide, ergonomically designed, non-slip rubber grip handle for comfort and ease of handling.



(738C)



AccuSharp® Fillet Knife Plus 2-Step Carbide-Ceramic Knife Sharpener

This lightweight, 6.5", single blade fillet knife, is a great choice for maneuvering the contours of the fish for carving out perfect fillets. This full-tang fillet knife is made from satin finished stainless steel coated with titanium to strengthen the cutting edge against premature wear. The fish scale design on the non-slip grip handle features an over molded TPR surface for a secure and comfortable grip while handling the knife. This knife comes with a knife sheath and our AccuSharp® 2-Step Carbide-Ceramic Knife Sharpener to help you keep your edge.



(736C)



AccuSharp® 6-Piece Fillet Knife Kit

This 6-piece kit comes with an 8", 6.5", 5.5", and 4.75" fillet knives. These full-tang fillet knives are made from satin finished stainless steel coated with titanium to strengthen the cutting edge against premature wear.

The fish scale design on the non-slip grip handle features an over molded TPR surface for a secure and comfortable grip while handling the knife. Comes with a nylon carry case and our AccuSharp® 2-Step Carbide-Ceramic Knife Sharpener to help you keep your edge.



(737C)



AccuSharp® Folding Sport Knife Combo Packs

We've combined the AccuSharp® Folding Sport Knife with our award-winning AccuSharp® Knife Sharpener and the AccuSharp® 2-Step Ceramic Knife Sharpener to help you keep your *edge*®. Constructed of anodized aluminum with a 420 stainless-steel blade, this knife will provide years of rust-free use.



(041C)



(042C)



(043C)



(044C)



(045C)



(046C)

AccuSharp® Lockback Knife Combo Packs

We've got your back! To ensure your lockback always has a sharp edge, we've combined the AccuSharp® Lockback Knife with our award-winning AccuSharp® Knife Sharpener and the AccuSharp® 2-Step Ceramic Knife Sharpener. The distinctive handle provides for a comfortable grip while the lockback feature securely holds the blade open for safe use. If necessary, remove the opening pins on both sides of the blade easily using the enclosed Allen wrench.



(716C)



(717C)



(718C)



(721C)



(722C)



(723C)

ParaForce® Lockback Knife Combo Packs

To keep your lockback sharp, we've combined the ParaForce® Lockback Knife with our AccuSharp® Sharp N Easy® 2-Step Ceramic Knife Sharpener to help you keep your *edge*®. This lockback knife features a belt clip, 3" 420 stainless steel blade, and a safety lock. This handy knife fits comfortably in your pocket and safely in the palm of your hand.



(810C)

Pairing the ParaForce® Lockback Knife with the ParaForce® Multi-Tool ensures that you have the necessary tools when you need it. This handy knife and multi-tool is compact and perfect for everyday carry.



(815C)

ParaForce® Multi-Tool

The ParaForce® Multi-Tool features 13 tools in one. A handy pocket tool to have around for the times when you need one. This multi-tool set comes with: Needle Nose Pliers, Regular Pliers, Scissors, Sharp Knife, Bottle Opener, Phillips Screwdriver, Serrated Knife, Can Opener, Nail Cleaner, Nail File, Small Screwdriver, Medium Screwdriver, and a Large Screwdriver.



Actual Size:
4.25" Open
2.75" Closed

(800C)

18 pc case pack in assorted colors

AccuSharp® Gardener's Multi-Tool

The AccuSharp® Gardener's Multi-Tool features 10 tools in one. If you are an avid gardener, this is the multi-tool to have around. This multi-tool set comes with: Pruner, Phillips Screwdriver, Small Screwdriver, Nail File (double sided), Large Screwdriver, Saw, Sharp Knife, Scraper, Ruler, and Nail/Staple Remover. This multi-tool is great for your home and gardening needs.



(084C)



Actual Size:
6.25" Open
4" Closed

AccuSharp® Sportsman's Multi-Tool

The AccuSharp® Sportsman's Multi-Tool features 11 tools in one. If you are an avid sportsman, this is the multi-tool for you. This multi-tool set comes with: Pruner, Phillips Screwdriver, Small Screwdriver, Nail File (double sided), Large Screwdriver, Saw, Sharp Knife, Fish Scaler, Ruler, and Nail/Staple Remover. This multi-tool is great for tackling any outdoor activity.



(085C)



Actual Size:
6.25" Open
4" Closed

ParaForce® 15-Function Multi-Tool

The ParaForce® Multi-Tool packs 15 tools into one compact device, making it perfect for DIY enthusiasts. It includes Needle Nose Pliers, Regular Pliers, Wire Cutter, Sharp Knife, Bottle Opener, Phillips Screwdriver, Boning Saw, Can Opener, Fish Scaler, Nail File, and three Screwdrivers (small, medium, and large), along with a Nail Remover and Ruler.



(802C)

Actual Size:
6" Open
4" Closed



The Big BOBBER Floating Cooler™

Capture everyone's attention with the Big Bobber Floating Cooler! Keep cool drinks by your side or when on the water! A great gift for the person who has everything! Great for fishermen, pools and hot tubs, rafting & float tubes, and the great outdoors. A must for every outdoor enthusiast!

Visit bigbobbercooler.com for more information.



(1020C)

MADE IN THE
USA



Scan here to
see how the
Big Bobber
Floating
Cooler Works.



Super Snaps Tarp Clip and Grommet Replacement

Super Snaps Tarp Clip and Grommet Replacement are ideal for securing tarps. Designed to withstand the outdoor elements, Super Snaps are great for the home, marine, ranch, camping, and more!



(1006C)



(1007C)

MADE IN THE USA



Super Snaps XL Tarp Clip and Grommet Replacement

Super Snaps XL Tarp Clip and Grommet Replacement provide extra strength holding power for securing tarps. Designed to withstand the outdoor elements, Super Snaps XL are great for DIY's, RVer's, boaters, campers, motor cyclists, construction trades, farmers & ranchers, and more!



(1008C)

MADE IN THE USA



AccuSharp® Knife and Tool Sharpener 12 Count Tray

Sharpen knives (even serrated knives), cleavers, axes, machetes, and many other cutting tools in about 10 seconds. The large, ergonomic handle fits in either hand & the full-length finger guard safely protects your fingers. The sharpening blades are reversible diamond-honed tungsten carbide that will provide years of reliable use.



Scan here to see how our AccuSharp® Knife and Tool Sharpener works.



(001C Case Packs)



(069 Tray)



AccuSharp® Compact Pull-Through Knife Sharpener 6 Count Tray

The AccuSharp® Compact Pull-Through Knife Sharpener combines our diamond-honed tungsten carbide sharpening blades and fine ceramic rods. This sharpener is perfect for sharpening and maintaining your blades. Available in white/blue and orange/green.



(082 Tray)



(083 Tray)



Scan here to see how our AccuSharp® Compact Pull-Through Sharpeners work.



AccuSharp® Sharp N Easy® 2-Step Knife Sharpener 24 Piece Counter Displays

The AccuSharp® Sharp N Easy® 2-Step Ceramic Knife Sharpener is an innovative tool that anyone can use. The pre-angled ceramic rods are exactly what you need to care for and maintain your blades. The two stages, dark for coarse and white for fine, allow for proper angle every time.



Scan here to see how our AccuSharp® Sharp N Easy® 2-Step Ceramic Knife Sharpener works.



(334CD)



(335CD)



Scan here to see how our AccuSharp® Sharp N Easy® 2-Step Ceramic Knife Sharpener works.



AccuSharp® 2-Step Carbide-Ceramic Knife Sharpener 24 Piece Counter Displays

The AccuSharp® 2-Step Carbide-Ceramic Knife Sharpener features pre-angled diamond-honed tungsten carbide blades and fine ceramic rods that will maintain an accurate edge. Just three or four strokes through the coarse slot restores the edge then three or four strokes through the fine rods finishes and polishes the fine edge for a smooth sharp finish. Available in blue/white and blaze orange.



(343CD)



(345CD)



AccuSharp® 6-Piece Replaceable Blade Razor Knife Plus Blades PDQ

This counter display accommodates 6 knife packages and 6 replacement blades, available for individual purchase or as a bundle. The replaceable blade razor knife boasts an innovative quick-release lever for easy blade changes and a side push button to lock the blade in three positions (110°, 145°, and 180°) to suit various cutting tasks. Measuring 8.5" when open, the knife features 3.5" 420 stainless steel blades and an ergonomically designed handle for effortless use. Ideal for camping, hiking, or everyday carry, the AccuSharp® Replaceable Blade Razor Knife and Replacement Blades combine exceptional functionality with style.



(745 PDQ)



(746 PDQ)



AccuSharp® Diamond•PRO 2-Step Knife Sharpener 12 Count Tray

Features pre-angled coarse diamond and fine ceramic rods to sharpen, restore, and then polish a blade's edge. The Diamond•PRO 2-Step exterior is made of brushed aluminum and finished with a rubber over-molded grip and rubber feet for safety.

Grits: Coarse 320 | Fine 1500



Scan here to see how our AccuSharp® Diamond PRO 2-Step Knife Sharpener works.



(016 Tray)



ParaForce® Multi-Tool 18 Piece Counter Display

The ParaForce® Multi-Tool features 13 tools in one:

1. Needle Nose Pliers
2. Regular Pliers
3. Pliers Scissors
4. Sharp Knife
5. Bottle Opener
6. Phillips Screwdriver
7. Serrated Knife
8. Can Opener
9. Nail Cleaner
10. Nail File (double side)
11. Small Screwdriver
12. Medium Screwdriver
13. Large Screwdriver



(800MTS)

18 pc Counter Display: 6 black, 6 blue, 3 orange and 3 yellow

ParaForce Lockback Knife 18 Piece Counter Display

The ParaForce® Lockback Knife features a belt clip, 3" 420 stainless steel blade, and a safety lock. This handy knife fits comfortably in your pocket and safely in the palm of your hand.



(801LBKS)



18 pc Counter Display
6 black, 6 blue, 3 orange and 3 camo

AccuSharp® Side Kick Floor Display

Each floor stand holds 36 AccuSharp® products and takes minutes to set up. Display as a stand-alone display with base, hang with 'S' clips (provided) or place on a counter or shelf.

Dimensions: 14" (W) x 58" (T) x 14" (D)
Interior: 13.5" x 21"



(001/002/006FS) (001FS)



(014FS)



(005/014/336FS)

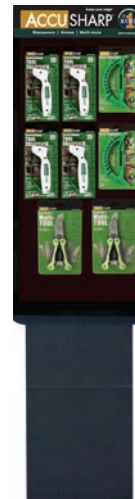
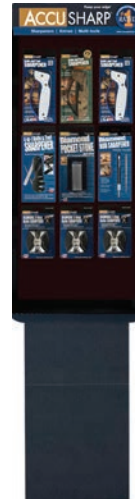
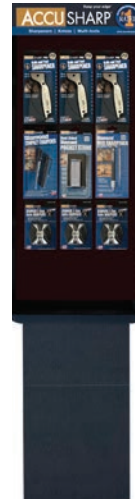
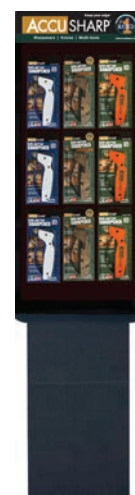


(001/(005/014FS)

AccuSharp® Wing Rack Floor Display

Let us help you design a display that works for your customer's needs. Display as a stand-alone display with base or hang with 'S' clips (provided).

Dimensions: 14" (W) x 58" (T) x 14" (D)
Interior: 13.5" x 33.5"



AccuSharp® Rack Display

Approximate Dimensions:

- 14" wide x 7" deep
- 2-Tier unit: 21" tall
(30" tall with display card)
- 1-Tier unit: 12" tall
(21" tall with display card)

* Free tier rack display with purchase of 36 pieces



AccuSharp® Point of Purchase (POP) Display

This simple but effective AccuSharp® acrylic point-of-purchase display unit does a great job of direct selling! Point out the terrific features of these sharpeners without ever saying a word and help increase your sales.

A proven way to increase your AccuSharp® Sales!



STAND OUT to your customers with Custom Imprints!



Keep your company's name and logo in front of your customers with custom imprinted AccuSharp® Knife and Tool Sharpeners. We encourage customers to mix and match finger guards, ink colors, and sharpeners to best fit their brand. With over 100+ different custom combinations to choose from, ***it's easy to create the perfect sharpener for YOUR brand.***

AccuSharp® Knife & Tool Sharpener

Logo size: 2.31" x .65". Minimum order quantity may apply.

In-stock sharpener handle colors:



In-stock finger guard colors:

*Only white handle color may substitute finger guard colors.



In-stock ink colors:



Sharp N Easy® 2-Step Knife Sharpener



Logo size: .778" x .4"

Minimum order quantity may apply.

Recommended ink colors:



STAND OUT to your customers with Custom Imprints!



Great for:

- Fishermen
- Pools & Hot Tubs
- Rafting & Float Tubes
- the Beach and Lake House

Features:

- It Really Floats
- Holds 12 Cans with Ice
- Insulated to Keep Things Cold
- Strong, Lightweight & Portable
- Easy to Carry
- Built-in Handle

Dimensions:

14.25" x 14.25" x 16"



Showcase your brand at outdoor events with this fun and iconic Big Bobber Floating Cooler by personalizing it with your company logo.



Minimum order quantity may apply.



ACCUSHARP®

Keep your edge®



AccuSharp® has been featured or reviewed by these publications:



1-830-693-6111 | www.accusharp.com | sales@accusharp.com

